

SPECIFICATIONS

HIGHBAYS

HOUSING

- Heavy duty cast aluminum housing
- Black housing standard, also available in silver and white

ELECTRICAL

- Quad Tap (QT) - 100 - 277V standard
- 347-480V also available
- 0-10V Dimmable Driver standard
- Operating Temperature: 40°C - 50°C (-40°F - 122°F)

OPTICAL SYSTEM

- CRI >70, >80, >90 offered
- Uplight Kit available for field installation
- Offered in 30K, 40K, and 50K
- 60°, 90°, and 120° Beam angle available

MOUNTING

- Fixture can be mounted via hook, 3/4" NPT adapter, yoke bracket, aircraft cable, and post-top

CODE COMPLIANCE

- cETLus Listed for Wet Locations
- IP65 Rated
- 4kV Surge protection
- DLC Listed
- RoHS Compliant
- Title24 Compliant
- FCC Part 15, class B compliant

WARRANTY

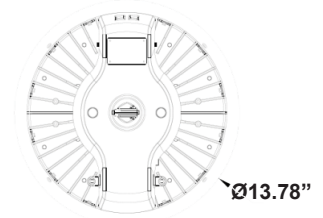
- 5 Year



HBLED49-F Integrated Controls LED Highbay

ORDERING INFORMATION

MODEL#	Wattage / Lumens	Voltage	CCT	Color	CRI	Mounting
HBLED49-F	75AL (75W, 10,800 Lm)	QT (120-277V)	30K	BK (Black)	70C	HM (Hook, standard)
	75BL (75W, 12,750 Lm)	480V (347-480V)	40K	WH (White)	80C	YM (Yoke)
	100AL (100W, 14,500 Lm)		50K	SL (Silver)	90C	SRM (Steel Rope)
	100BL (100W, 17,000 Lm)					NPT (NPT 1/2"-3/4")
	150AL (150W, 21,000 Lm)					PT (Post Top-75W)
	150BL (150W, 24,650 Lm)					
	190AL (190W, 27,500 Lm)					
	190BL (190W, 32,000 Lm)					



Options/Accessories on 2nd Page

OPTIONS / ACCESSORIES

OPTIONS (Factory Installed)

Options

EM	- Battery Backup
UPL	- Uplight
60D	- 60° Beam Angle (120° standard)
90D	- 90° Beam Angle (120° standard)

Controls

DALI	- Dali Control
ZANTC	- Plug & Play Zigbee Controller with Antenna

Individual Motion Sensors

OCSD	- Internal Daylight Sensor
MOCS	- Plug and Play Motion Sensor (remote controlled)

Lens Options

PR	- Polycarbonate Relector
AR	- Aluminum Relector
DL	- Frosted Flat Lens

Cords

TWLCP1	- 120V 15A NEMA Twist Lock Plug
TWLCP2	- 277V 15A NEMA Twist Lock Plug
TWLCP3	- 120V 20A NEMA Twist Lock Plug
TWLCP4	- 277V 20A NEMA Twist Lock Plug
TWLCP5	- 480V 20A NEMA Twist Lock Plug

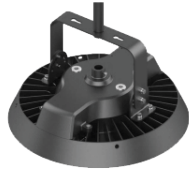
Surge Protection

SGP1	- 120-277V, 10KV Surge Protection
SGP2	- 120-277V, 20KV Surge Protection
SGP3	- 208-480V, 10KV Surge Protection
SGP4	- 208-480V, 20KV Surge Protection

MOUNTING



HM (standard)



YM



NPT



PT



SRM