

SPECIFICATIONS

INDOOR

HOUSING

- Die Cast aluminium heat sink
- Architectural frames
- C-channel and flat hanger bars for tie down to ceiling grids
- Junction box is mounted on the frame for easy wiring , driver access for installation, and replacement

ELECTRICAL

- Quad Tap (QT) - 120/208/240/277V
- 50/60Hz
- 0-10V dimming standard

OPTICAL SYSTEM

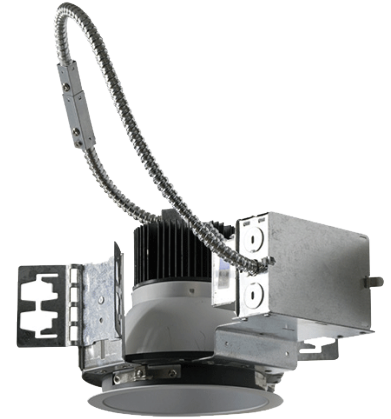
- Up to 50,000 hours
- CRI \geq 80
- Offered in 3000K and 4000K

CODE COMPLIANCE

- cULus Listed for Wet Locations (not suitable for coastal/salt water areas)
- Energy Star Listed
- RoHS Compliant
- Meets State of California Title 24

WARRANTY

- 5 Year



Shown with trim and frame.
Ordered separately.

ARCFK6 6" LED Architectural Can & Frame-In Kit

ORDERING INFORMATION

Trim Models

CATALOG #	WATTAGE	LUMENS	COLOR
ARCFK6-28L-QT-30K	28W	2,210	3000K
ARCFK6-48L-QT-40K	48W	3,770	4000K

Frame Models

CATALOG #	
ARCFK6-28L-FMK	- Frame for 28W Model
ARCFK6-48L-FMK	- Frame for 48W Model

Accessories (Order Separately, Ships on Side)

CATALOG #	
ARCFK-BH	- Flat Bar Hanger - 27"

